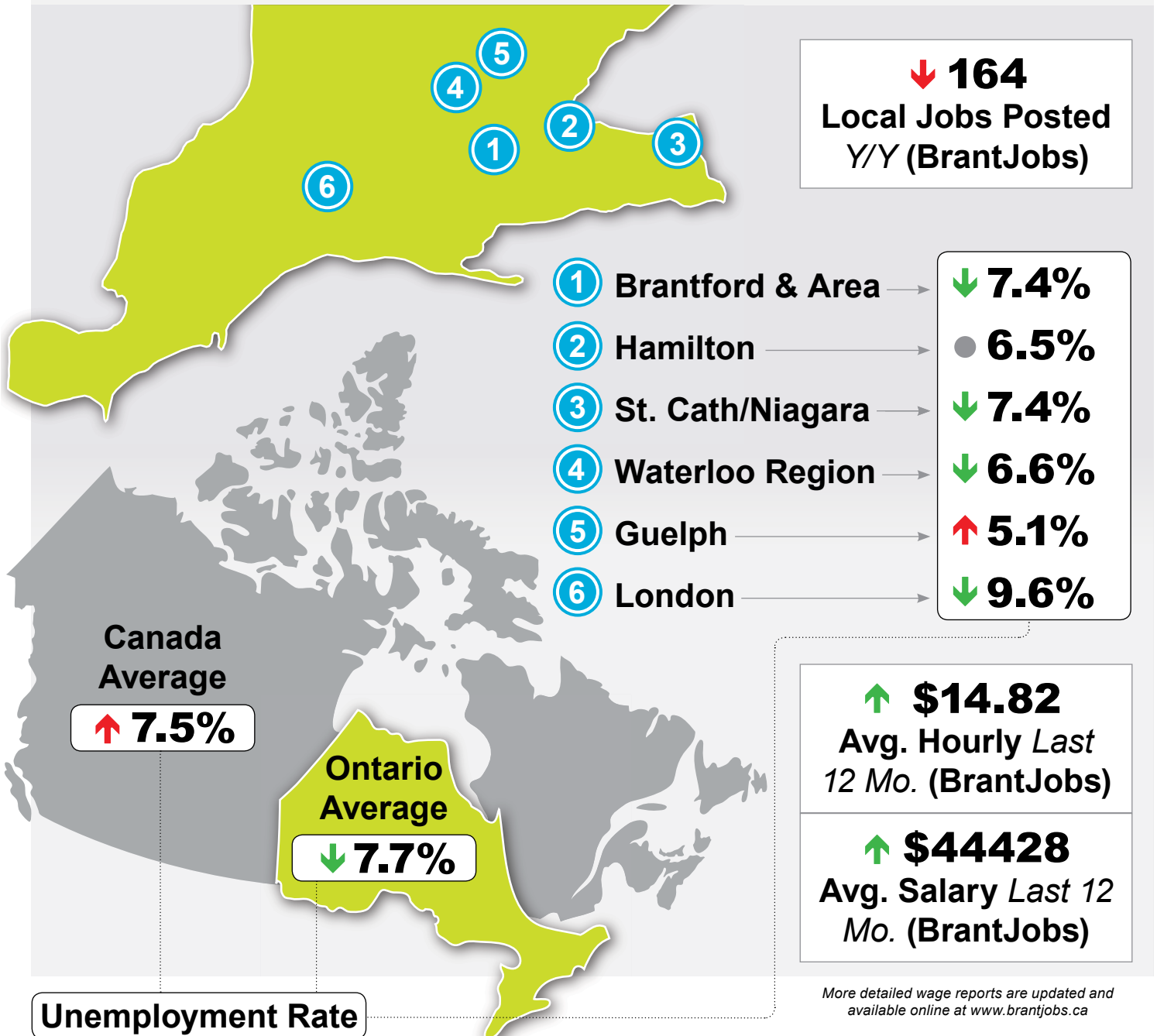


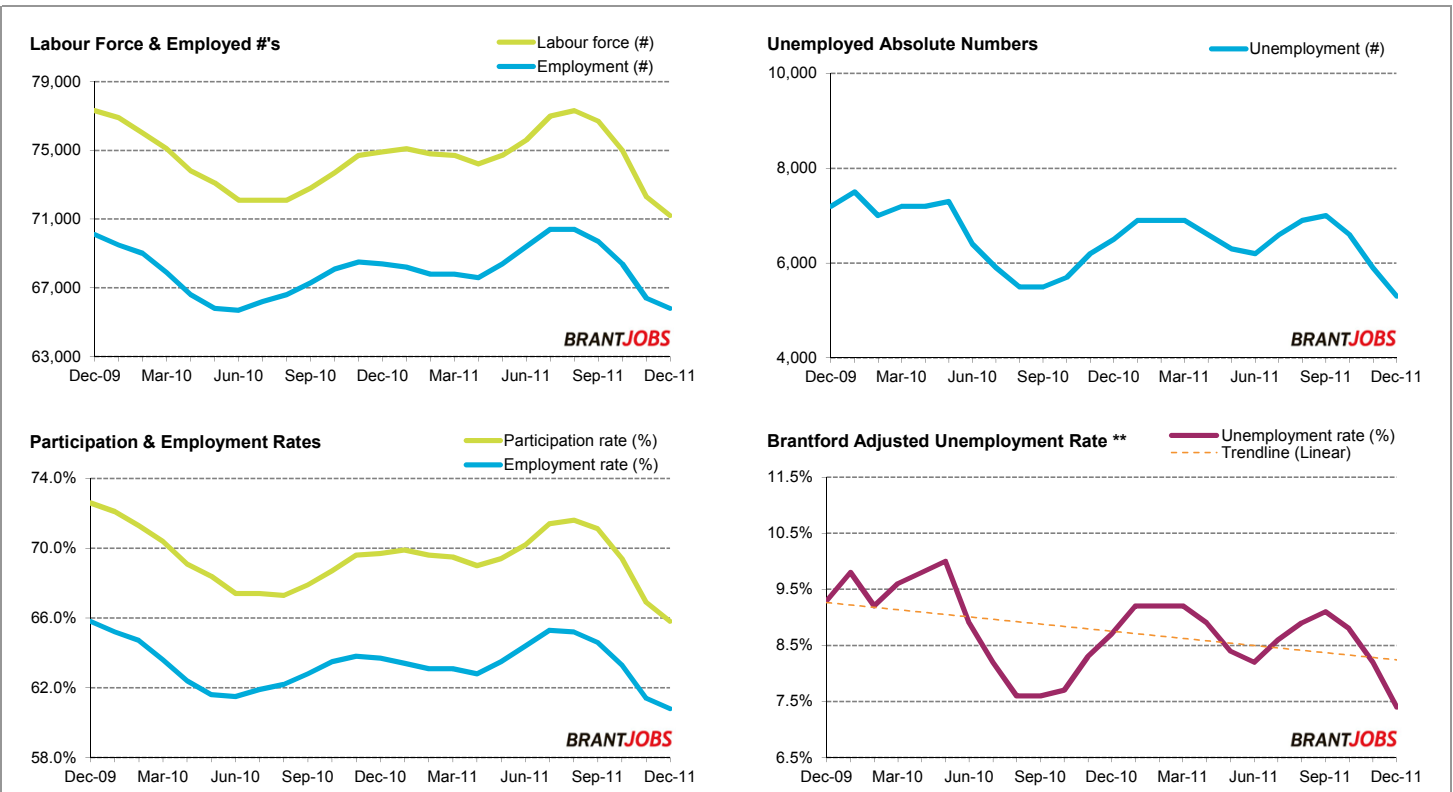
# December 2011

## Local Labour Market Report\*

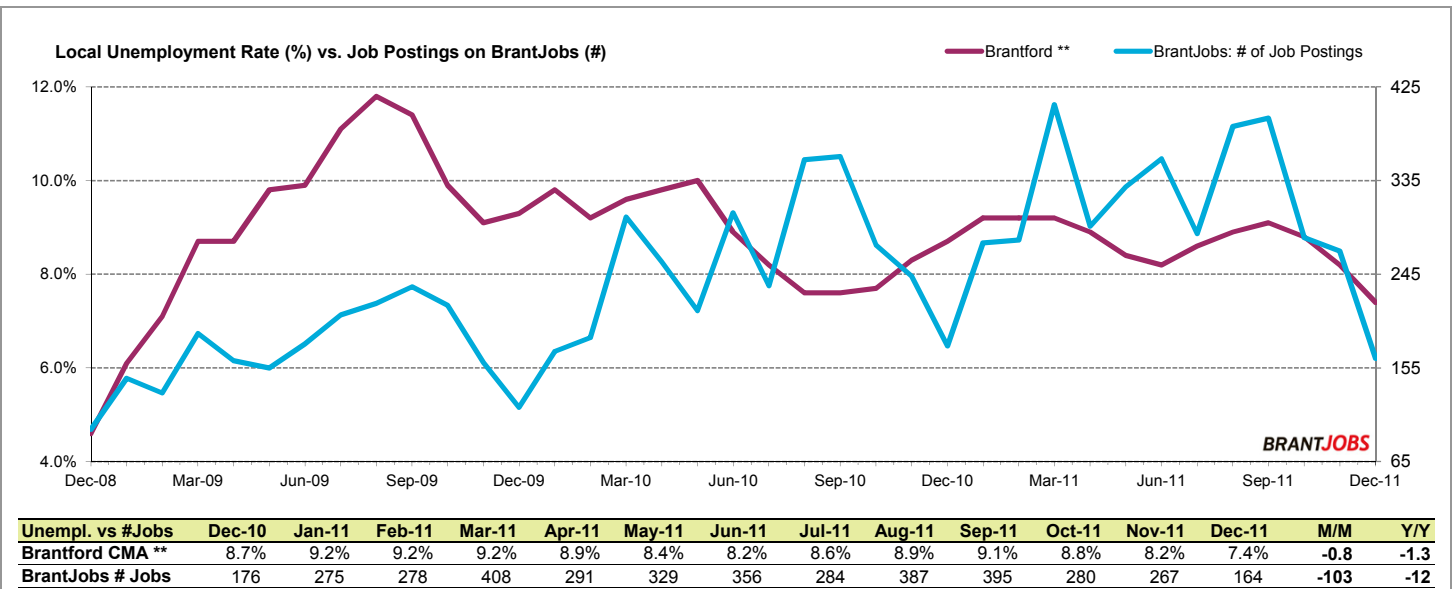


More detailed wage reports are updated and available online at [www.brantjobs.ca](http://www.brantjobs.ca)

\*Source: Statistics Canada and BrantJobs. Both must be credited when data from this report is used. Municipal rates are reported as 3 month moving averages; provincial and national rates are reported monthly. On this page, **changes are compared to the previous month, unless otherwise indicated.** Prepared by BrantJobs, available online at [www.brantjobs.ca](http://www.brantjobs.ca).



Brantford CMA	Dec-10	Jan-11	Feb-11	Mar-11	Apr-11	May-11	Jun-11	Jul-11	Aug-11	Sep-11	Oct-11	Nov-11	Dec-11	M/M	Y/Y
<b>Total Population</b>	107,400	107,500	107,500	107,500	107,600	107,700	107,700	107,800	107,900	107,900	108,000	108,100	108,200	100	800
<b>Labour Force</b>	74,900	75,100	74,800	74,700	74,200	74,700	75,600	77,000	77,300	76,700	75,000	72,300	71,200	-1,100	-3,700
<b>Employed</b>	68,400	68,200	67,800	67,800	67,600	68,400	69,400	70,400	70,400	69,700	68,400	66,400	65,800	-600	-2,600
<b>Unemployed</b>	6,500	6,900	6,900	6,900	6,600	6,300	6,200	6,600	6,900	7,000	6,600	5,900	5,300	-600	-1,200
<b>Unemploy't Rate</b>	8.7%	9.2%	9.2%	9.2%	8.9%	8.4%	8.2%	8.6%	8.9%	9.1%	8.8%	8.2%	7.4%	-0.8	-1.3
<b>Participat'n Rate</b>	69.7%	69.9%	69.6%	69.5%	69.0%	69.4%	70.2%	71.4%	71.6%	71.1%	69.4%	66.9%	65.8%	-1.1	-3.9
<b>Employ'm't Rate</b>	63.7%	63.4%	63.1%	63.1%	62.8%	63.5%	64.4%	65.3%	65.2%	64.6%	63.3%	61.4%	60.8%	-0.6	-2.9



Unempl. vs #Jobs	Dec-10	Jan-11	Feb-11	Mar-11	Apr-11	May-11	Jun-11	Jul-11	Aug-11	Sep-11	Oct-11	Nov-11	Dec-11	M/M	Y/Y
<b>Brantford CMA **</b>	8.7%	9.2%	9.2%	9.2%	8.9%	8.4%	8.2%	8.6%	8.9%	9.1%	8.8%	8.2%	7.4%	-0.8	-1.3
<b>BrantJobs # Jobs</b>	176	275	278	408	291	329	356	284	387	395	280	267	164	-103	-12

\* Source: Stats Canada. Statistics Canada and BrantJobs.ca must be credited when data from this report is used.

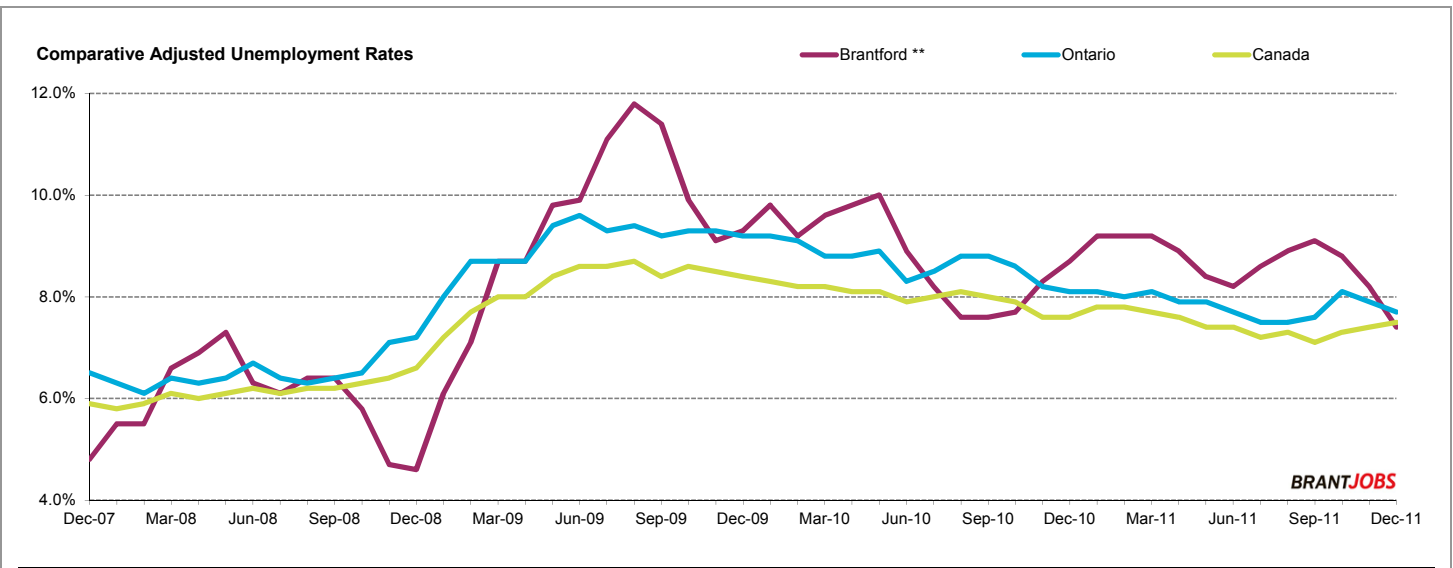
\*\* Municipal rates are reported as 3 month moving averages; provincial and national rates are reported monthly.

† Brantford's Unadjusted rate is included to show historical comparison vs adjusted. Unadjusted rates are no longer reported post-Dec 2010.

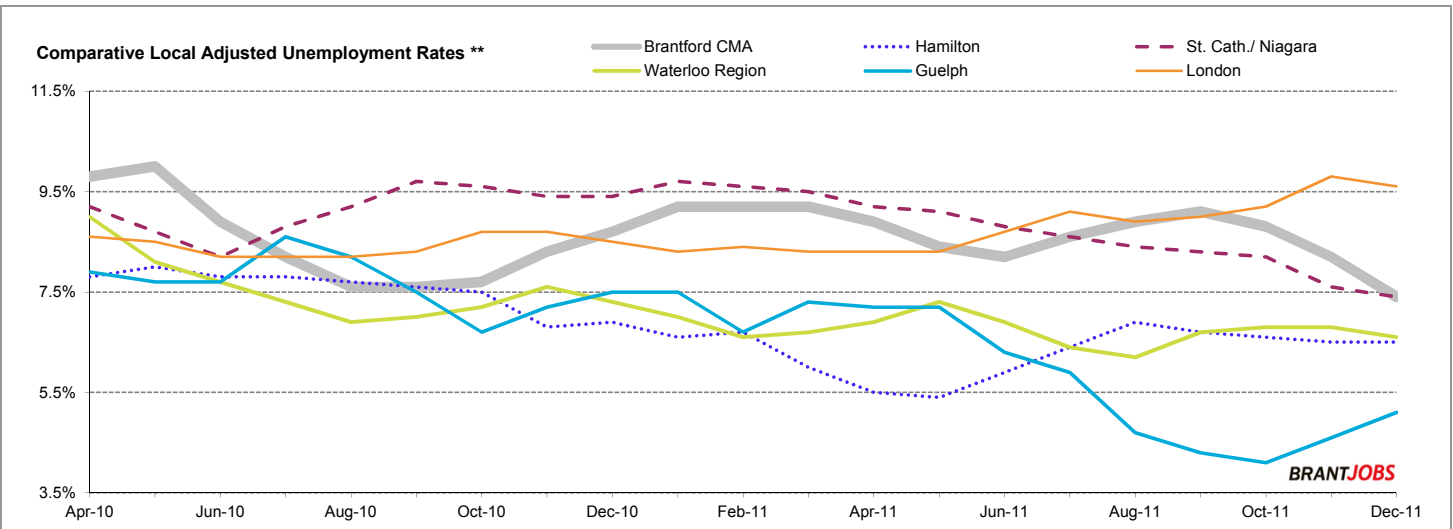
Data for the County of Brant is not reported separately by Stats Canada.

Prepared by BrantJobs and available online at [www.brantjobs.ca](http://www.brantjobs.ca).





Unemployment %	Dec-10	Jan-11	Feb-11	Mar-11	Apr-11	May-11	Jun-11	Jul-11	Aug-11	Sep-11	Oct-11	Nov-11	Dec-11	M/M	Y/Y
<b>Brantford CMA **</b>	8.7%	9.2%	9.2%	9.2%	8.9%	8.4%	8.2%	8.6%	8.9%	9.1%	8.8%	8.2%	7.4%	-0.8	-1.3
<b>Ontario</b>	8.1%	8.1%	8.0%	8.1%	7.9%	7.9%	7.7%	7.5%	7.5%	7.6%	8.1%	7.9%	7.7%	-0.2	-0.4
<b>Canada</b>	7.6%	7.8%	7.8%	7.7%	7.6%	7.4%	7.4%	7.2%	7.3%	7.1%	7.3%	7.4%	7.5%	0.1	-0.1



Unemployment %	Dec-10	Jan-11	Feb-11	Mar-11	Apr-11	May-11	Jun-11	Jul-11	Aug-11	Sep-11	Oct-11	Nov-11	Dec-11	M/M	Y/Y
<b>Brantford CMA</b>	8.7%	9.2%	9.2%	9.2%	8.9%	8.4%	8.2%	8.6%	8.9%	9.1%	8.8%	8.2%	7.4%	-0.8	-1.3
<b>Hamilton</b>	6.9%	6.6%	6.7%	6.0%	5.5%	5.4%	5.9%	6.4%	6.9%	6.7%	6.6%	6.5%	6.5%	0.0	-0.4
<b>St. Cath./ Niagara</b>	9.4%	9.7%	9.6%	9.5%	9.2%	9.1%	8.8%	8.6%	8.4%	8.3%	8.2%	7.6%	7.4%	-0.2	-2.0
<b>Waterloo Region</b>	7.3%	7.0%	6.6%	6.7%	6.9%	7.3%	6.9%	6.4%	6.2%	6.7%	6.8%	6.8%	6.6%	-0.2	-0.7
<b>Guelph</b>	7.5%	7.5%	6.7%	7.3%	7.2%	7.2%	6.3%	5.9%	4.7%	4.3%	4.1%	4.6%	5.1%	0.5	-2.4
<b>London</b>	8.5%	8.3%	8.4%	8.3%	8.3%	8.3%	8.7%	9.1%	8.9%	9.0%	9.2%	9.8%	9.6%	-0.2	1.1

\* Source: Stats Canada. Statistics Canada and BrantJobs.ca must be credited when data from this report is used.

\*\* Municipal rates are reported as 3 month moving averages; provincial and national rates are reported monthly.

† Brantford's Unadjusted rate is included to show historical comparison vs adjusted. Unadjusted rates are no longer reported post-Dec 2010.

Data for the County of Brant is not reported separately by Stats Canada.

Prepared by BrantJobs and available online at [www.brantjobs.ca](http://www.brantjobs.ca).

